



2001 - A Rogaining Odyssey

**WARA Autumn 12 Hour
7th April 2001**

LEGEND

SCALE 1:50,000, 5 metre contour interval

0 1km 2km 3km

Control	
Contours	
Hash House	
Magnetic North Line	
Out of Bounds	
Road, Major Gravel	
Road, Gravel	
Track	
Track Continuation	
Watercourse	
Water Drop	

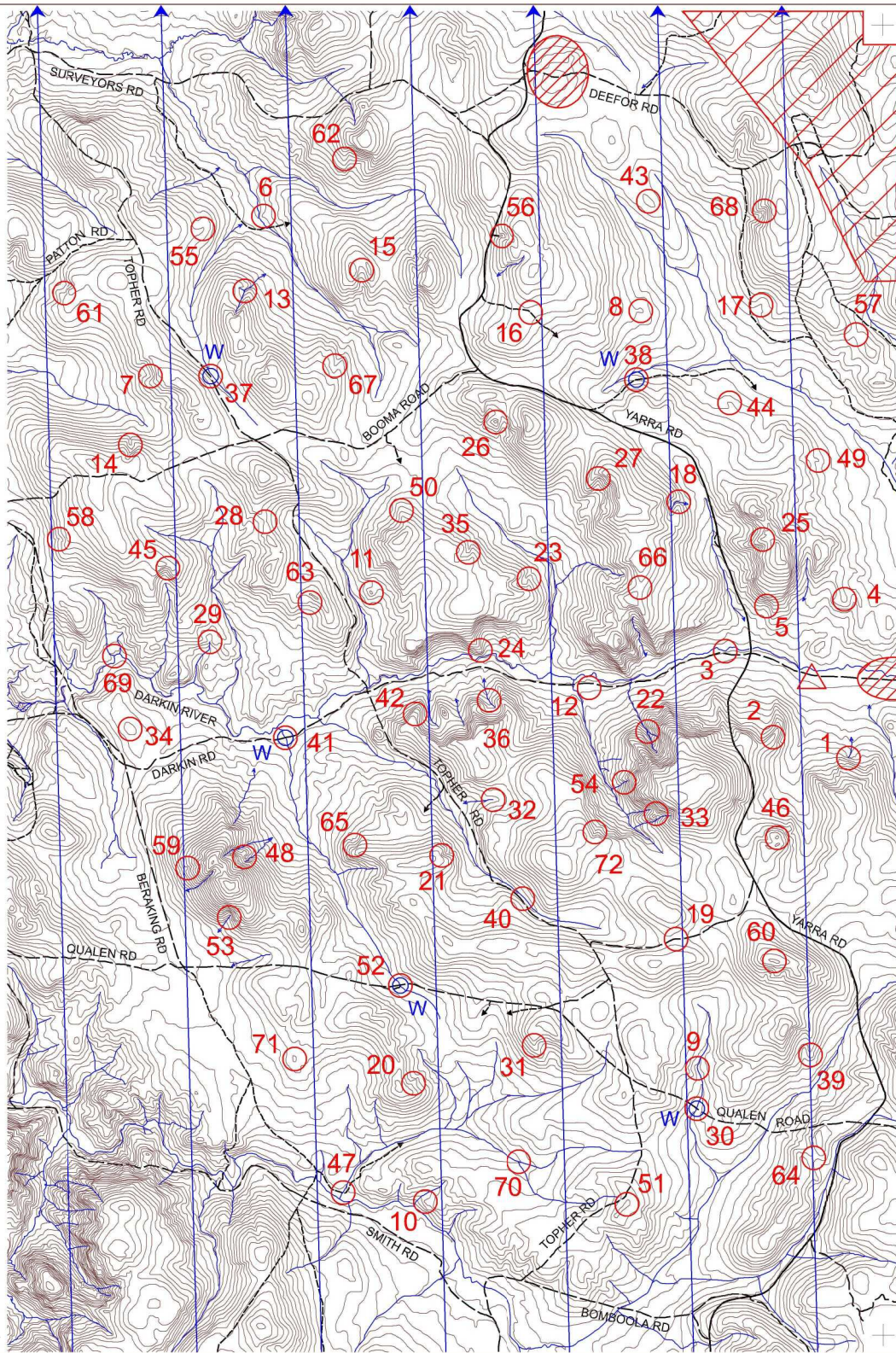
SETTERS AND VETTERS

Ian Thomsett Warren Smith
Gary Carroll Di Challen

Possession of this map does not give
right of entry to this area.

This map was produced by a HAL 9000
super computer using OCAD. Data
supplied by DOLA and used under copy
licence 393/93.

WARA is supported by funding
from Sport and Recreation WA.



2001 - A Rogaining Odyssey. WARA Autumn 12 Hour. 7th April 2001

No.	Description	Points	No.	Description	Points	Important Information
1	In the watercourse, upper end (north side of rock surface 200x250m)	20	43	The knoll	60	Control Cards From 0930 Saturday
2	The spur	20	44	The spur	60	
3	The watercourse, bend, south side	20	45	The gully, broad, head of	60	
4	The spur	20	46	The northern knoll	60	
5	The gully	20	47	Track and watercourse crossing	60	
6	The spur, small and rocky	20	48	The minor gully, head of	60	
7	The gully, head of	20				
8	The spur	20	49	The spur, on a knoll	70	
9	The watercourse, bend	20	50	The spur	70	
10	The spur	20	51	The knoll, NE side	70	
11	The knoll	20	52	The track and watercourse crossing, north side. (Water Drop)	70	
12	A pine grove, 80x80m, in the middle	20	53	The watercourse	70	
			54	The watercourse, deep	70	Briefing 0945 Saturday
13	The watercourse junction	30				Start 1000 Saturday
14	The gully	30	55	The spur, top of	80	
15	The gully	30	56	A quarry	80	Hash House Opens at 1600 Sat Closes at 2300 Sat
16	The track, bend	30	57	The saddle	80	
17	The gully, shallow	30	58	The gully	80	Opens 0630 Sun Closes 0830 Sun
18	The gully	30	59	The gully	80	
19	The saddle, incredibly broad, south side of track	30	60	The knoll	80	
20	The spur, top of, near 2m boulder cluster	30				
21	The gully, head of	30	61	The gully, head of	90	Sunset 1803
22	The watercourse junction	30	62	The spur, south side of a 4m boulder	90	
23	The spur	30	63	The gully, minor	90	Moonrise 1752
24	The spur	30	64	The saddle	90	
			65	The gully, head of	90	Late Penalty 10 points per minute or part minute
25	The southern spur, top of	40	66	The saddle	90	
26	The knoll	40				Controls Used 72
27	The gully	40	67	The gully	100	
28	The saddle	40	68	The gully, among some boulders	100	
29	The watercourse, head of	40	69	The western watercourse junction, north side	100	
30	The track and watercourse crossing, south side. (Water Drop)	40	70	The watercourse junction	100	
31	The spur	40	71	The knoll, broad	100	
32	The watercourse, head of	40	72	The gully	100	
33	The saddle	40				
34	The knoll, broad	40				
35	The gully, bend	40				
36	The watercourse	40				
				Water Drops: At Controls 30, 37, 38, 41, 52		Total Points 3780
				Patrolled Roads: Beraking Road, Qualen Road, Topher Road, Booma Road, Yarra Road, Track to Control 38		
37	The track, west side (Water Drop)	50				
38	The track, south side (Water Drop)	50				
39	The spur, on a rocky knoll	50				
40	A clearing, 40x25m, NE Side	50				
41	The track and watercourse crossing, north side. (Water Drop)	50				
42	The spur	50				